

LUXURY

HOUSE



Gorgeous villa of about 220 m² built on a beautiful park of approximately 7,200 m².

Vast entry, luminous living-room with veranda about 65 m² overlooking the swimming pool, done up and equipped kitchen,

parental suite with office, bathroom with sauna, 4 other rooms, 2 bathrooms.

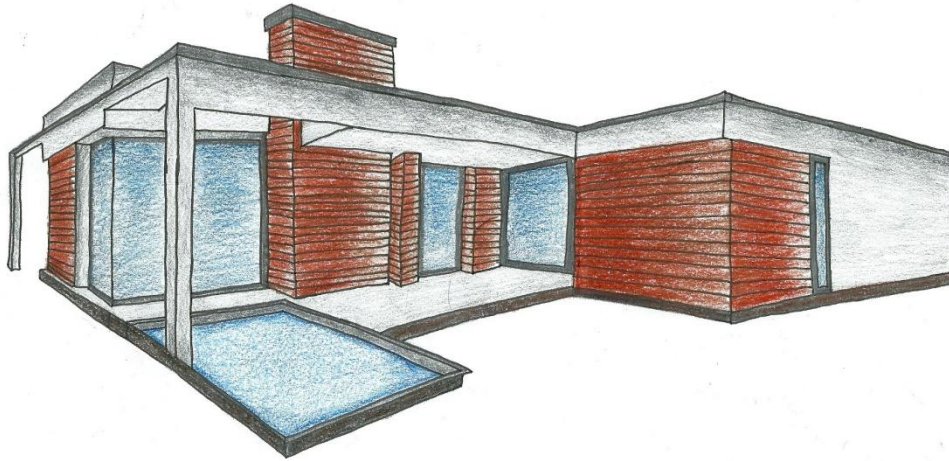
Complete basement with 3 garages, wine cellar, laundry room, boiler room.

Heated and secured swimming pool.

Very bright villa, without vis-à-vis in an idyllic frame.

Quality services. 800 000 € of which 3.9% of fees charged to the purchaser. 770 000 € excluding fees.

LUXURY HOUSE



PERSPECTIVE

The luxury house is a residential house. It is a flat floor house for one or two residents. It was designed to be built in a new housing estate.

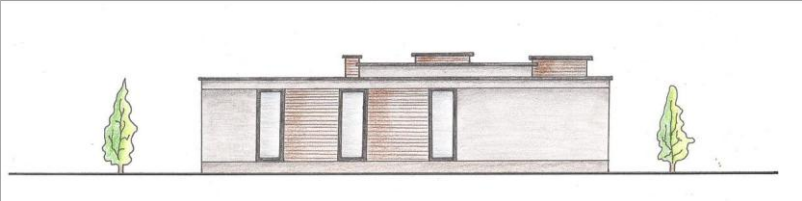
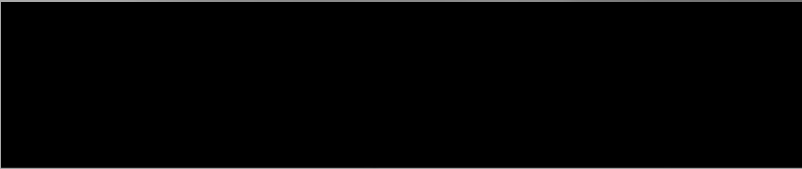
The house is designed in a new style. Facade is made of brown formwork which is filled up with grey plaster. Also there are some glazing on the facades.

Both doors and windows are made of plastic.

There are fourteen rooms in the house: 2 halls and 2 bathrooms, the kitchen with dining room, bedroom, pantry, gym, laundry, living room with chimney, boiler room and dry and wet sauna.

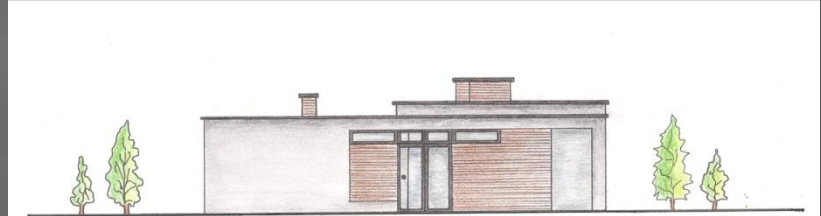
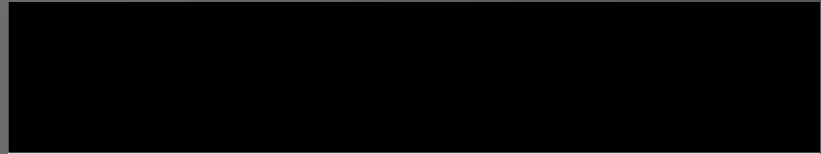
From the living room and partly the gym there is an access to the swimming pool.

The whole area of the house is 126 square meters.



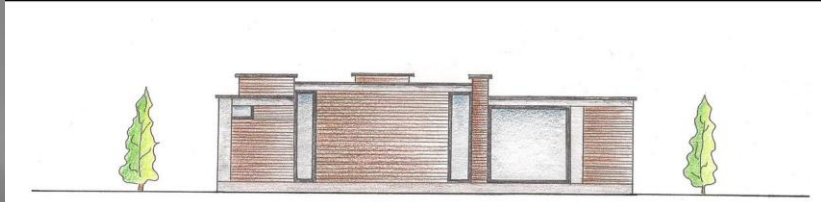
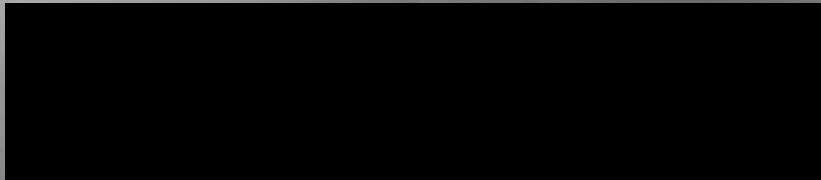
EAST ELEVATION

SKALA 1:100



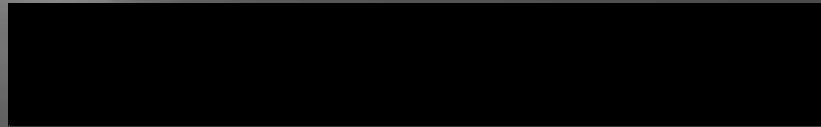
NORTHERN ELEVATION

SKALA 1:100



WEST ELEVATION

SKALA 1:100



SOUTH ELEVATION

SKALA 1:100

Enjoy the luminous garden and the swimming pool in summer



POP
Art
Bathroom





The main house offers on the ground floor an entrance hall, a living room with fireplace, an office, an ultra modern kitchen, a wine cellar, and four en suite bedrooms with walk-in closets.





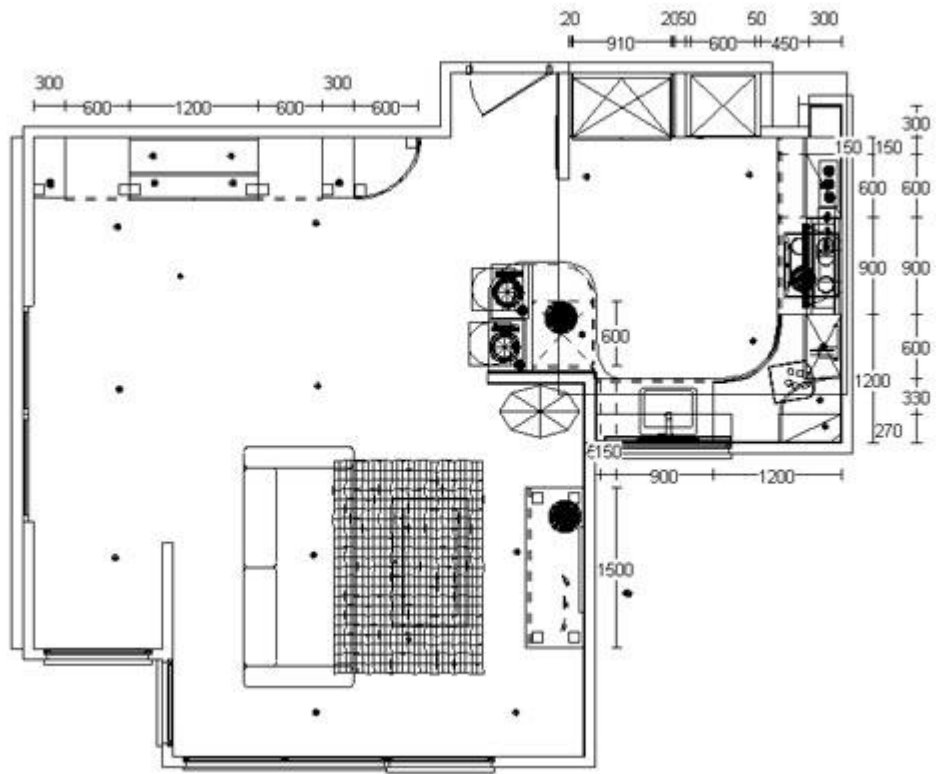
LIVING ROOM FLOORING





Living -room :
one of those 2 wall facings



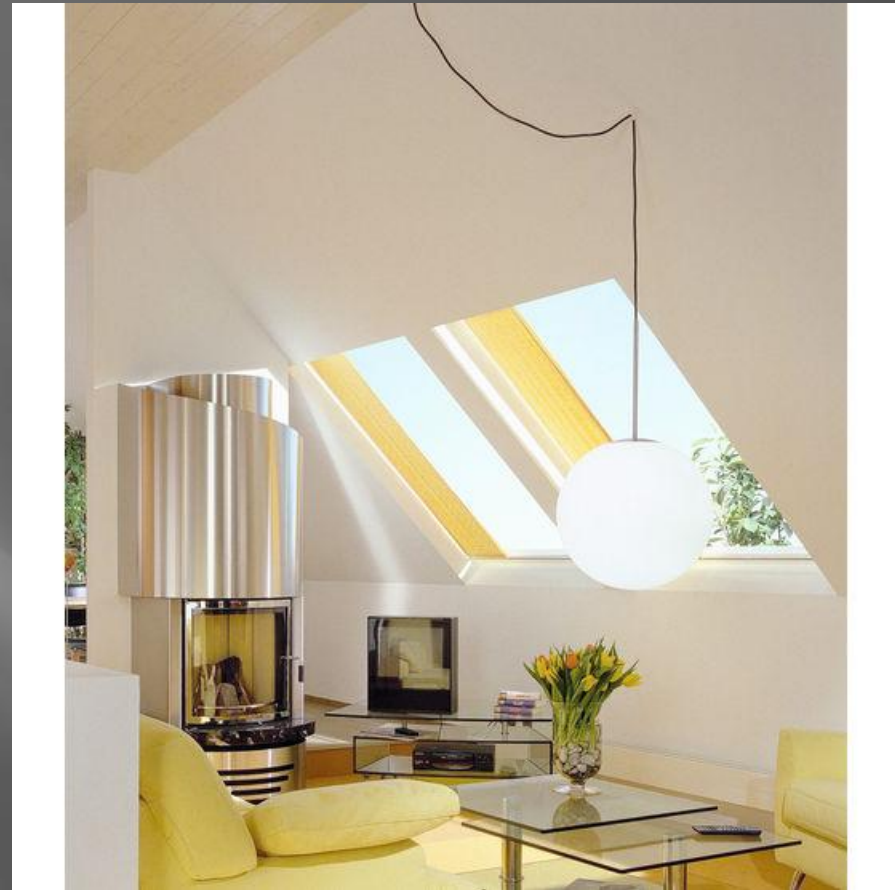


A MODERN KITCHEN
a kitchen worthy of a great
restaurant



BEDROOM 1

pure materials
Zen atmosphere



BEDROOMS :
wall paper on one wall and white paint on the 3
other walls.



The property is fully air conditioned and offer a humidifier for optimal comfort.

The audio system acoustic located in between the walls gives an impressive sound quality, and the large windows opening onto a park planted with lavender and its own vineyard.

Each element of the property has been considered to cultivate uniqueness and elitism.

